

124°04'E 124°05'E 124°06'E 124°07'E 124°08'E

9°39'N

9°38'N

9°37'N

9°36'N

9°39'N

9°38'N

9°37'N

9°36'N



Republic of the Philippines  
PROVINCE OF BOHOL  
City of Tagbilaran



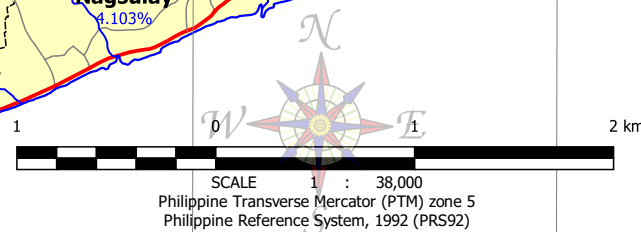
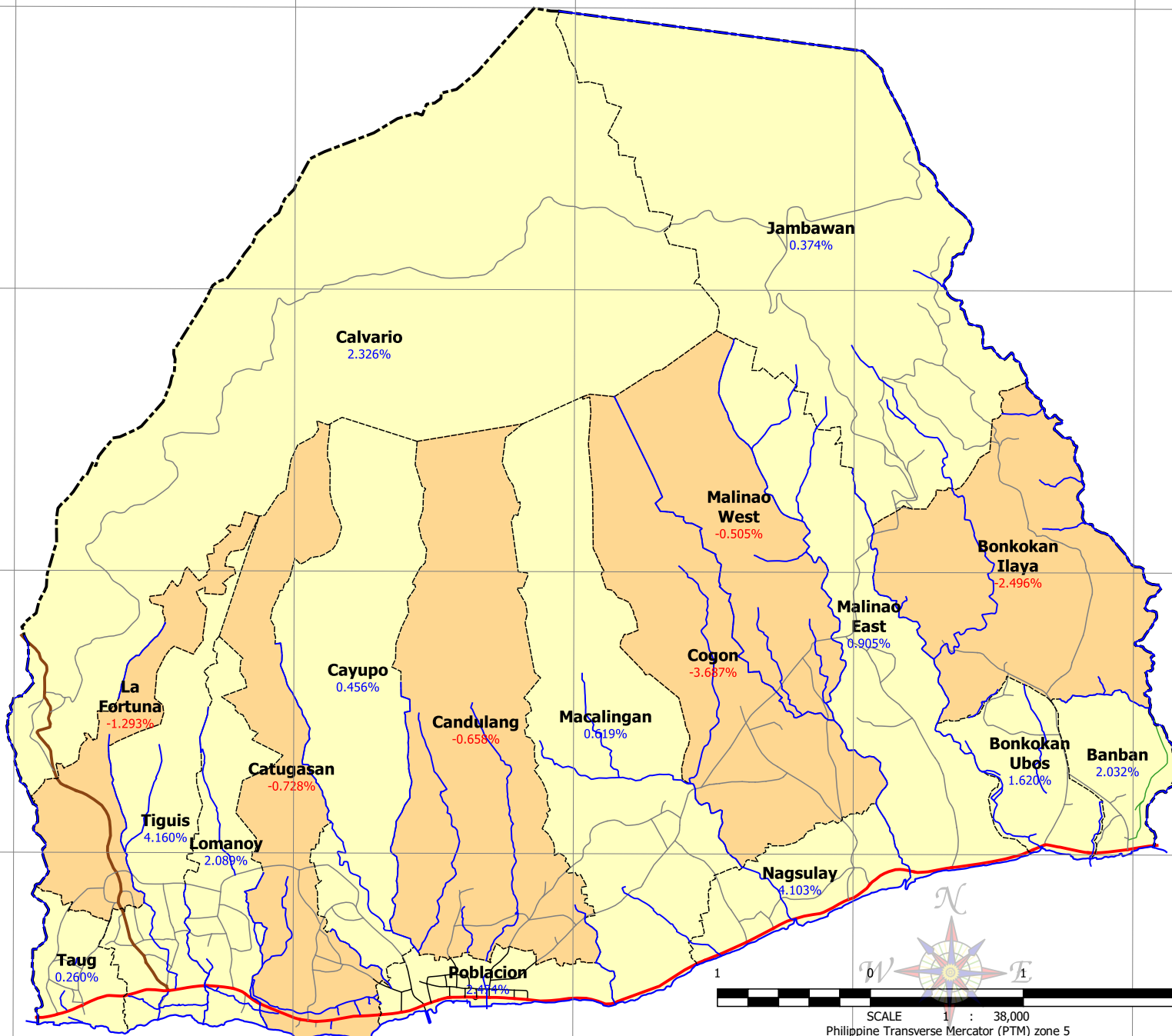
**PROVINCIAL PLANNING AND  
DEVELOPMENT OFFICE**

**ANNUAL GROWTH RATE  
Census Year: 1990-1995**

**Municipality of LILA**

**LEGEND**

- Coastline
- Municipal Boundary
- Barangay Boundary
- National Road
- Provincial Road
- Municipal Road
- Barangay Road
- Farm-to-Market Road
- Annual Growth Rate 1990-1995**
- Decreasing rate
- Increased by up to 5%



- NOTES:**
- Boundaries and river system based on parcellary drawing digitized by LGU-Lila Assessor's Office
  - Coastline digitized by PPDO-Bohol GIS Unit from Bing Aerial images
  - Road Network based on the Municipal Roads Database acquired through the CRID project
  - Annual Growth Rate data from Philippines Statistics Authority
  - This map is not authoritative, not verified, and to be used for indicative purposes only

124°04'E 124°05'E 124°06'E 124°07'E 124°08'E